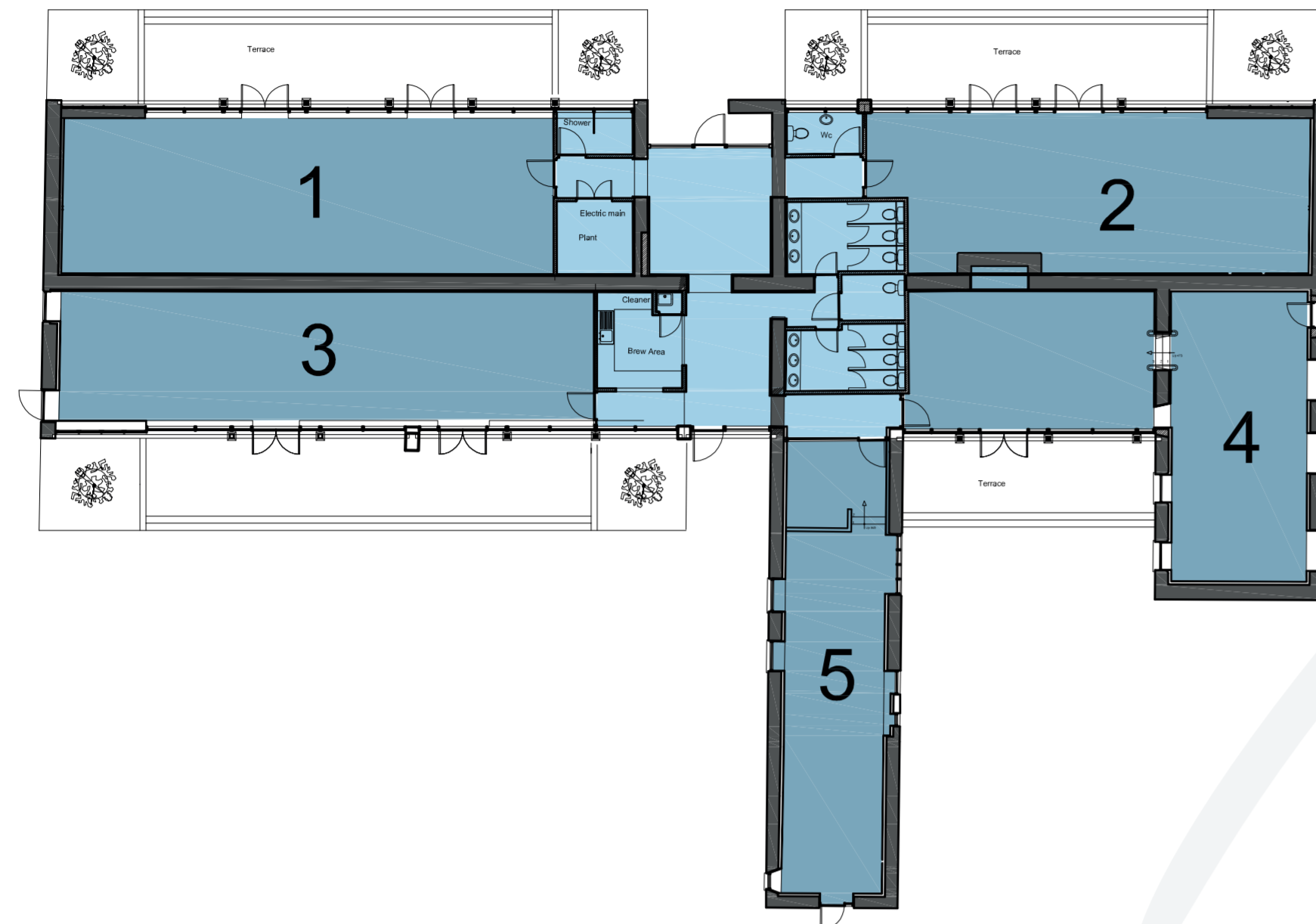




KIRTLINGTON business centre



Building A
Scale 1:200

TENANTS

Building A

COMING AVAILABLE (Currently as one 5758 sq ft building)

Building B

TVM UK Animal Health Ltd (Office 7, 11 & 12)

Classic Sports Finance (Office 6, Building B)

M V Kelly Ltd (Office 8 & 9)

COMING AVAILABLE (Office 10, Building B)

Perazzi (Office 15)

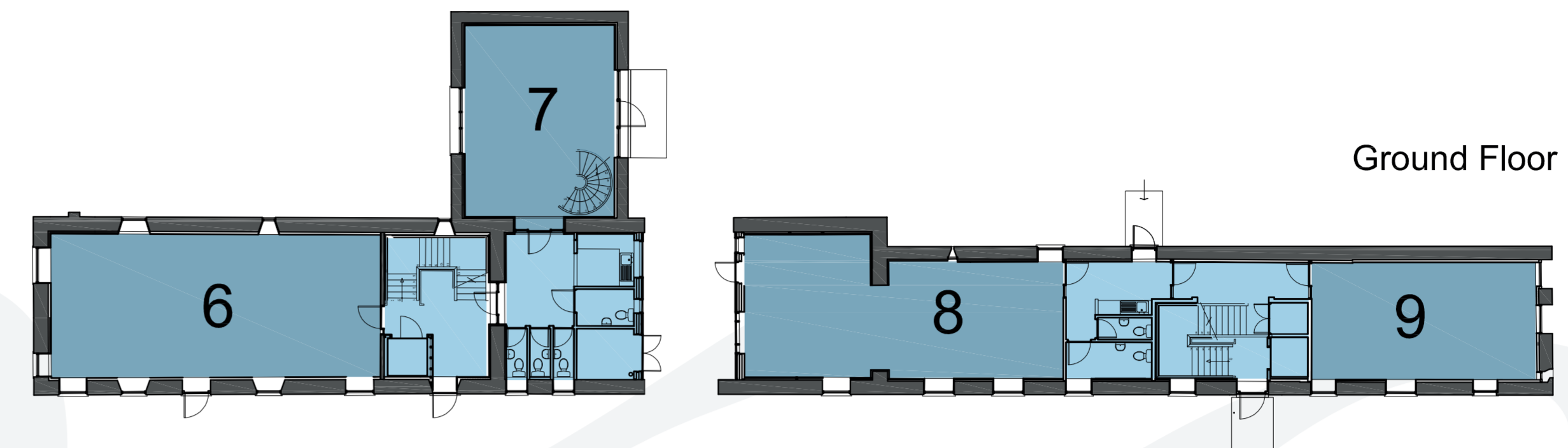
Building C

Oxfordshire Gardener Ltd (The Garden Barn, Building C)

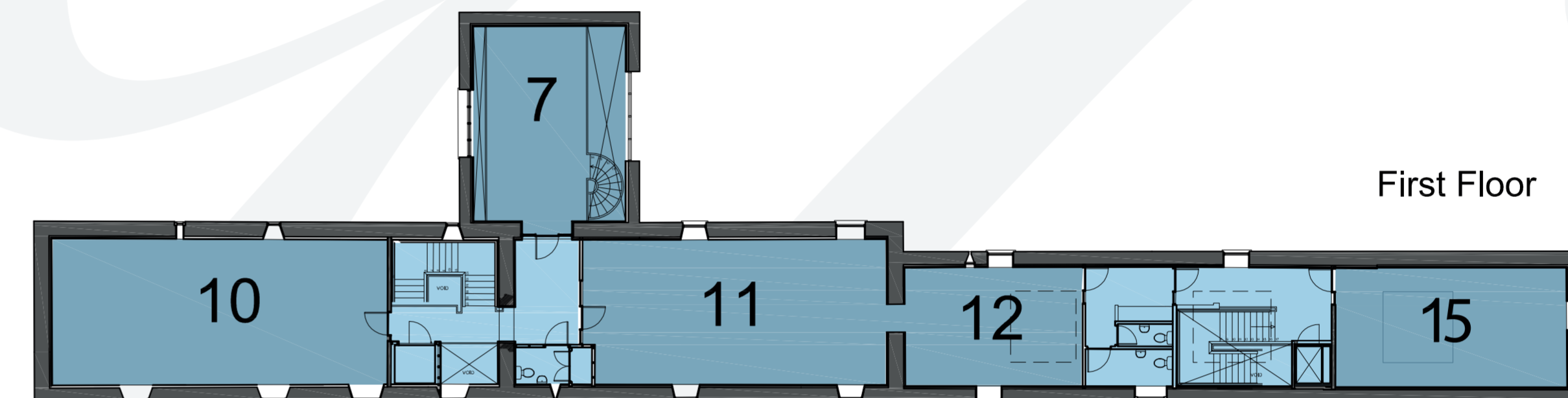
Bright Creative Marketing Agency (The Garden Barn, Building C)

MANAGEMENT OFFICE:

Becky Fifield - **+44 (0) 7854 941335**
offices@kirtlingtonbusinesscentre.co.uk

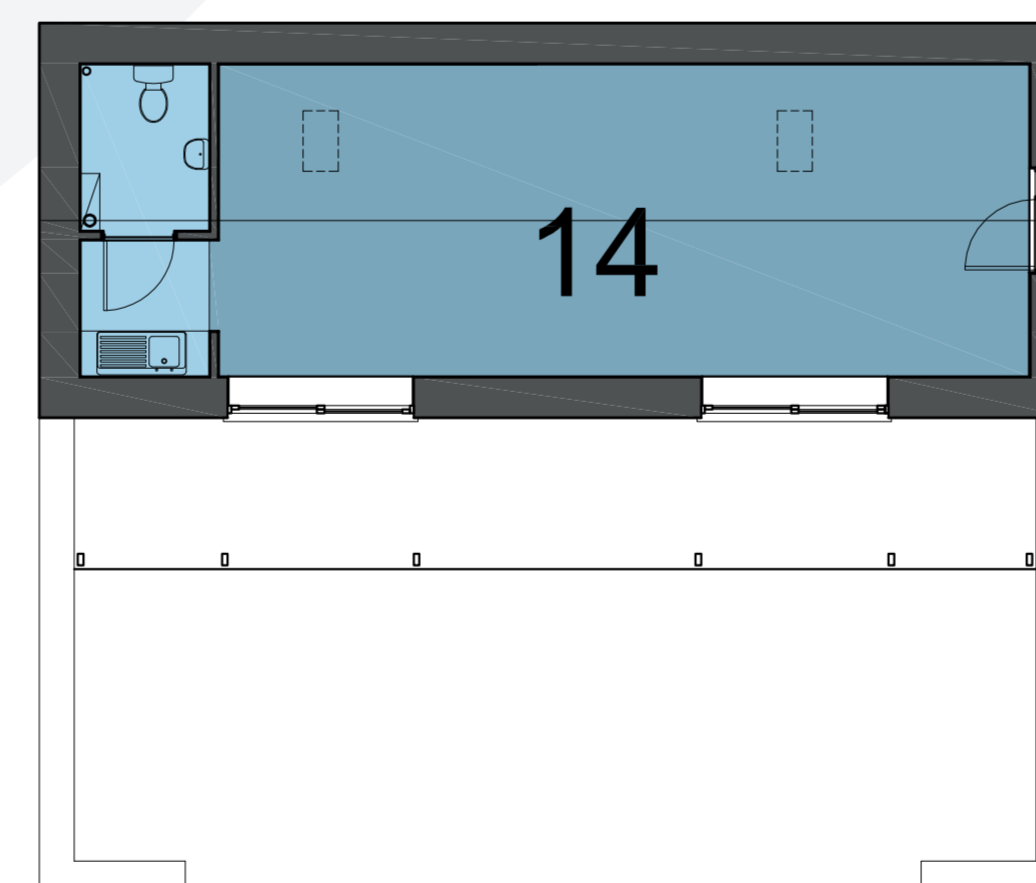


Ground Floor



First Floor

Building B
Scale 1:200



Building C
Scale 1:100

SIZING - Sq Ft/ Metres

Office 6	=	862 sq ft (80.07 m)
Office 7	=	523 sq ft (48.62 sq m) - GF
		417 sq ft (38.70 sq m) - FF
Office 8	=	761 sq ft (70.68 sq m)
Office 9	=	490 sq ft (45.55 sq m)
Office 10	=	866 sq ft (80.44 sq m)
Office 11	=	762 sq ft (70.81 sq m)
Office 12	=	371 sq ft (34.44 sq m)
Office 15	=	552 sq ft (51.31 sq m)

Nb. All floor areas are approximate